

what we do

"I have worked with four MES interns on yearlong habitat connectivity projects, and I can honestly say that they have been among my favorite people to work with. All have been critical thinkers, conscientious about their work, and keenly interested in making a positive contribution to our environment. I benefit from our conversations and the sense that we're all still learning and having fun."

KELLY MCALLISTER

Wildlife Biologist, Washington Department of Transportation Environmental Services Office

WHERE DO MES ALUMNI WORK?

MES alumni are employed in virtually all areas of the public and nonprofit sectors throughout the country and abroad. Our graduates are also making valuable contributions in private enterprise. Alumni work on diverse environmental issues that include climate change, forest protection, and conservation of critical habitat areas. While the program is geared toward professional preparation, a growing number of MES alumni have pursued further studies in doctoral and law programs. Employers have included:

Northwest Indian Fisheries Commission

The Nature Conservancy

British Columbia Provincial Government

Rocky Mountain Bird Observatory

Washington Sea Grant

The Trust for Public Land

City Governments (Olympia, Seattle, Tacoma, and others)

Pacific Science Center

Washington state departments (including Transportation, Ecology, Fish and Wildlife, Health, and Natural Resources)

Pacific Shellfish Institute

US Department of the Interior, Forest Service, Fish & Wildlife Service, and National Park Service

World Wildlife Fund

Washington state tribes (Nisqually, Quinault, Squaxin Island, Yakama and others)

Joint Base Lewis-McChord

US Environmental Protection Agency

NOAA



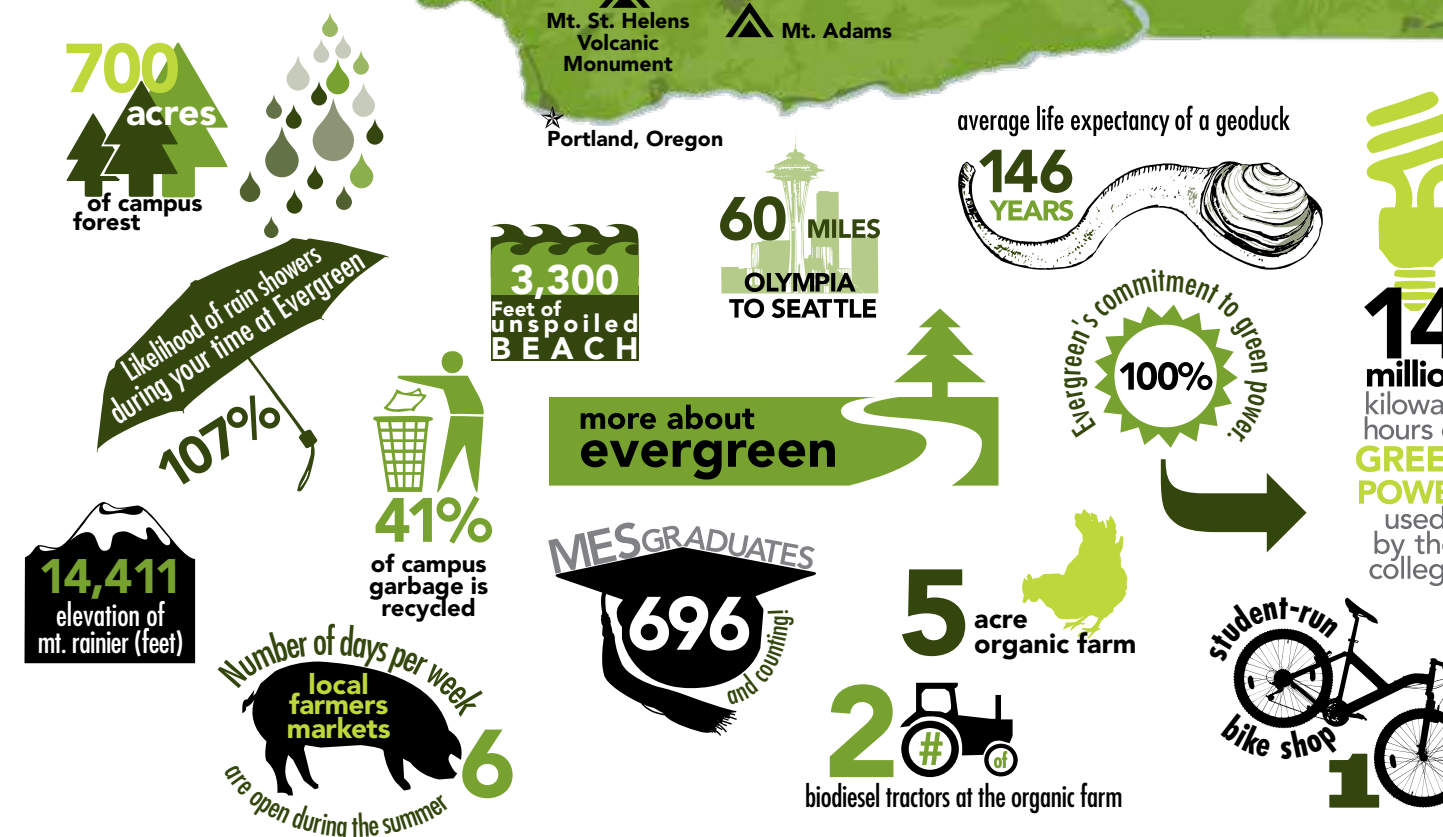
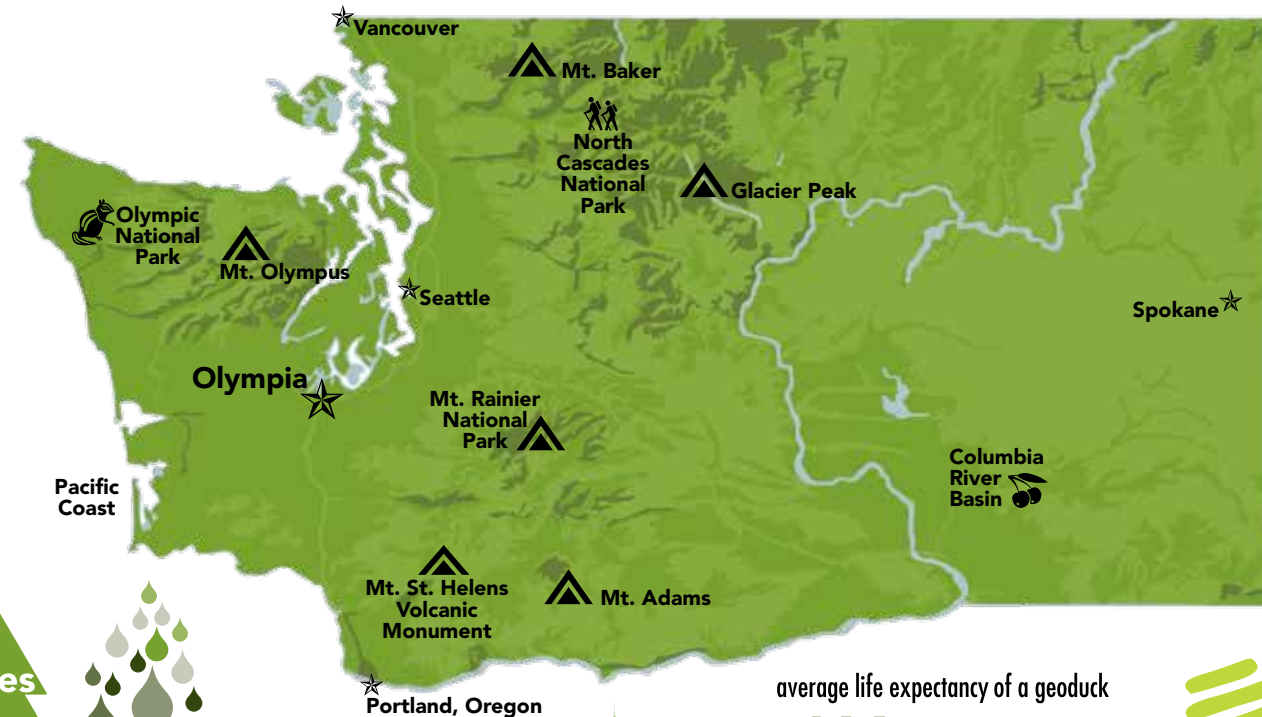
"Everyone has their own reasons for pursuing a master's degree, but most of us want to improve our career prospects or potential for that next promotion. For me, it was to develop my skills as an environmental professional and find a career that I was truly passionate about. I was able to take advantage of the internships available to students at the Washington State Department of Transportation as an intern in their Environmental Services Division. This allowed me to foster relationships with other environmental professionals, be included in current and relevant research, and pursue other opportunities that I would not have had without being in the graduate program at Evergreen. Within a year's time I went from being an intern to managing a team of interns. I am currently working for the Washington State Department of Health as an investigative field biologist for the Zoonotic Disease Program, a career that I am truly passionate about."

DAVE KANGISER MES graduate

where we are

CLOSE TO EVERYTHING

Halfway between the Pacific Ocean beaches and the Cascade mountains, yet only an hour south of Seattle and two hours north of Portland, Olympia furnishes a wide variety of both urban and rural opportunities for students pursuing an education in environmental studies. Its location on the Salish Sea (or Puget Sound), with views of the Olympic Mountains and Mt. Rainier, make it a beautiful backdrop for pursuing a graduate education. As Washington State's capital, it provides immediate access to several environmentally focused state and federal agencies, policymakers, and nonprofits.



 **the evergreen state college**

2700 Evergreen Parkway NW
Olympia, WA 98505

MES Master of Environmental Studies
Graduate Program on the Environment
evergreen.edu/mes • 360.867.6225



• master of
environmental studies

TRAINING ENVIRONMENTAL LEADERS IN THE PACIFIC NORTHWEST SINCE 1984.



 **the evergreen state college**
olympia, washington



who we are

WHAT IS AN MES DEGREE?

A Master of Environmental Studies (MES) degree is an interdisciplinary degree that prepares graduates for the complex nature of professional environmental work. Evergreen’s Graduate Program on the Environment awards an MES degree versus a Master of Science (MS) or a Master of Arts (MA) in a specific discipline because we believe this well-rounded degree better prepares our graduates to be environmental leaders.

OUR MISSION

Founded in 1984, Evergreen’s Graduate Program on the Environment is an internationally known program that prepares students to think critically and chart creative and radical possibilities to solve environmental problems. The program emphasizes environmental issues and opportunities in the Pacific Northwest.

THINK LIKE OUR GRADUATES

Our graduates are creative, critical thinkers who approach environmental challenges from an interdisciplinary perspective. Employers highly value our graduates because of their ability to understand the broader ecological, economic, political, social, and cultural impacts of a single environmental issue. Our graduates are professionals with the leadership, communication, and research skills necessary to address current environmental issues.

IS EVERGREEN RIGHT FOR ME?

If you are interested in studying and interacting with our world’s greatest environmental challenges, then this program is for you. We recognize that the best environmental solutions come from a wide variety of perspectives—that is why we accept all majors, and why our students, who come to us from across the US and abroad, represent a wide range of ages, cultures, and expertise. Regardless of a student’s educational or work background, we train our graduates to build upon their strengths by creating holistic approaches to environmental challenges through exploring diverse methodologies, collaborating across disciplines, and implementing a research thesis.

OUR LEARNING ENVIRONMENT

Evergreen is a public liberal arts institution that has been at the forefront of educational innovation since its founding in 1967. MES builds upon that tradition. Our students work together in a cohort model forming a tight-knit community that leads to lasting professional and personal relationships. Students engage with interdisciplinary faculty teams in a participatory learning environment; the majority of classes involve workshops, seminars, and other experiential learning techniques.

Classes at Evergreen are credit/no credit, and narrative evaluations are used in place of grades to assess performance, reflecting both student and faculty assessment of learning. In addition, the faculty to student ratio is 15:1, allowing students to gain full access to faculty expertise.

FITS YOUR SCHEDULE

- Night Classes
 - Independent study options
 - Optional Summer Electives and Internships
- Finish in two years (full-time) or three years (part-time)
 - Work full- or part-time while earning your degree
 - Commute from Tacoma, Seattle, or neighboring counties

curriculum

CORE COURSES 32 CREDITS

Core courses are team-taught by faculty members from different disciplines, and meet Tuesday and Thursday evenings, 6-10pm. Core classes teach students to think about environmental challenges from an interdisciplinary perspective and guide students toward thesis completion in their final year. Students attend core classes sequentially with a cohort of 45 students. All core classes are eight credits each.

YEAR	FALL	WINTER	SPRING
1	Conceptualizing Our Regional Environment (gCORE)	Environmental & Social Sustainability (ESS)	Research Design and Quantitative Methods (RDQM)

YEAR	FALL	WINTER	SPRING
2	Case Studies & Thesis Design	Thesis Workshop	Thesis Workshop

ELECTIVES 24 CREDITS

Students must take the equivalent of six 4-credit MES electives. Electives are offered on Monday or Wednesday evenings from 6-10pm and generally hold 15 students. Four electives are offered every quarter and are primarily taught by Ph.D.-level professionals in the field. Specific topics include:

- Forest ecology
 - Environmental policy
 - Environmental education
 - Climate justice
 - Ecological economics
 - Aquatic ecology
- Climate change
 - Geographic Information Systems (GIS)
 - Renewable energy
 - Biological conservation
 - Water management
 - Political ecology

In addition to elective courses, students can develop expertise in specific areas through internships, independent study, electives from Evergreen’s Master of Public Administration program, and other accredited graduate-level courses.

INTERNSHIPS

Internships are highly encouraged because they often lead to thesis topics and future employment. Because of our location in Washington’s state capital, many internships are with state agencies, and a number are with federal and local government, as well as local, national, and international organizations or businesses. Program staff and faculty will help you find your perfect internship. Many internships are paid.

THESIS 16 CREDITS

All students are required to write a thesis of their own design; ideas come from individual student interests, internships, community organization needs or faculty research. Students do not need to know their thesis topic when entering the program and will be matched with a faculty advisor in their final year to guide them toward thesis completion.

Students are also required to attend a thesis workshop in the winter and spring of their final year. Workshops are offered a few evenings each quarter.

how to apply

ADMISSION REQUIREMENTS

1. A bachelor's degree from an accredited institution of higher education.
2. A minimum grade point average of 3.0 for the last 90 graded quarter-hours or the last 60 graded semester-hours.
3. Evidence of writing, analytical and general communication skills of high quality and at a level appropriate for graduate study, as demonstrated by the application materials.
4. Completion of the Graduate Record Examination (GRE), with scores sent to Evergreen.
5. Completion of 4 quarter credits (or 3 semester credits) in each of the following courses within the five years prior to starting the MES degree (must earn a “C” or higher):
 - ★ one social science course (e.g. economics, sociology, political science, anthropology, human geography)
 - ★ one natural science course (e.g. biology, ecology, geology, chemistry, physical geography)
 - ★ one statistics course
6. Completion of undergraduate courses that include at least 15 quarter-hours in social science and 15 quarter-hours in natural science is recommended.
7. English language proficiency.

Please see evergreen.edu/mes/admission for most recent admission requirements.

FINANCIAL AID

On average, almost 75% of MES students who apply for MES awards receive some kind of non-loan aid. Of those who apply for MES aid, 95% of nonresidents and 70% of residents are awarded. The average award for nonresidents typically covers 23% of nonresident tuition (the range is 5% to 46% of tuition). The average award for residents usually covers 36% of tuition (the range is 4% to more than 100% of tuition).

Applicants and admits are highly encouraged to fill out the FAFSA (fafsa.ed.gov) as soon as possible after January 1 to qualify for need-based financial aid, which includes loans, scholarships, fellowships, and tuition waivers. The program also offers merit-based awards, awards for international students, and a scholarship for AmeriCorps alumni. Most awards require an application.

Visit evergreen.edu/mes/financial for more information.

COSTS

As a public institution, Evergreen is committed to making graduate education accessible to a wide spectrum of students. Our program is one of the most affordable environmental master's degrees in the country. Most students fund tuition with financial aid and full- or part-time work. See evergreen.edu/mes/costs for current tuition rates.

APPLICATION CHECKLIST

The priority application deadline for each Fall quarter is February 15. Submit the following to be considered for admission:

- ☐ Online graduate admission application + \$50 nonrefundable application fee
(AmeriCorps members, AmeriCorps alumni, Returned Peace Corps Volunteers, McNair Scholars, and military veterans apply for free)
- ☐ Official transcripts from every college or university attended
- ☐ A typed statement of purpose, 500 to 1,000 words
- ☐ Three letters of recommendation
- ☐ Graduate Record Examination (GRE) scores
- ☐ Resumé