

mes/mpa

# Update

Published by the MES and MPA programs at The Evergreen State College

## ***Building Alliances:***

### **Breaking Barriers of Race and Class**

Join a workshop lead by ...

• **Diane Kahaumia**

*First People's Recruitment*

• **Inbal Kashtan**

Counselor, issues of racism

• **Victor Lewis**

Founder, *Environmentalists Against Racism*,  
and this year's Rachel Carson

Environmental Forum keynote speaker

**Wednesday, May 22nd, 3:30 - 5 pm**

Call 866-6000 x6479 for location & details

## **Time to Ask for Financial Aid**

The MPA and MES programs have a variety of fellowships and assistantships available for the 1991-92 school year. In addition to student loan programs, there are tuition waivers, program assistantships, and work study positions open.

MPA also offers a full-tuition Foundation Fellowship and the John Walker Fellowship. MES has two full-tuition Foundation Fellowships. For more information, contact Bonita or the Office of Financial Aid at 866-6000 x6205.

## **UPDATE Needs Your Submissions!**

Spring Deadlines: **May 17, 31\*** (\*alumni mailing)

This is the last day for submissions. Please place them in the newsletter mailbox in Lab I Room 3023.

Personal contract, internship and alumni updates are strongly encouraged! Please feel free to also submit:

<i>News Releases</i>	<i>Poetry</i>	<i>Event Reports</i>
<i>Feature Articles</i>	<i>Photography</i>	<i>Editorials</i>
<i>Quotes</i>	<i>Illustrations</i>	<i>Resource Listings</i>

All submissions **must** have legible names, phone numbers, and references when needed. It would be extremely helpful to have submissions entered on a Mac computer disk.

Editors: Allen Pleus (MES), Peter Moulton (MPA)

## **MPA Hires New Faculty**

Three new MPA faculty members will be joining the Evergreen community this Fall: Zahid Shariff, Cheryl King and Andrea Ziegert.

### ***Zahid Shariff***

A visiting faculty member this past year, Zahid has taught in the Political Science departments of Northeastern Illinois University, Brooklyn College and Panjab University in Lahore, Pakistan.

Zahid's current research interests include public finance and budgeting, racism, affirmative action, and workforce diversity. He recently delivered two papers at the American Society for Public Administration conference in Washington, DC: "Affirmative Action in Washington State," and "Different Ways of Knowing about Racism."

### ***Cheryl King***

Cheryl will be joining us from Denver, where she was a Research Associate and Honorary Faculty at the University of Colorado. She received her Masters from UCD in Applied Experimental Psychology, and is currently a candidate for her doctorate in Public Administration.

Cheryl's graduate level teaching experience has included statistics, research methods, and women in public administration. Her professional interests include cooperative, competitive and avoidance strategies, and gender issues in management.

### ***Andrea Ziegert***

Andrea is coming from the School of Public and Environmental Affairs at Indiana University, where she received an Outstanding Graduate Faculty Award in 1990. Her doctoral thesis in Economics at the University of North Carolina addressed the "Effects of Anticipated Inflation on the Valuation of and Additions to Housing Stocks."

Andrea also taught at N.C. State in Raleigh, and U.N.C. in Chapel Hill. Her research interests include public finance, labor economics, urban economics, and health economics.

## **Inside**

***Essay & Thesis Publication*.....2**

***MES Editor Hits the Big Time*.....3**

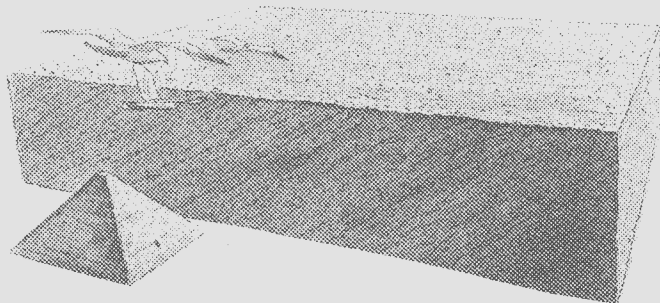
***Internships & Employment*.....4**

# It's 1991

## Do You Know What Your Trash Is?

*(Excerpts from the excellent May 1991 National Geographic article "Once and Future Landfills" by William L. Rathje, with illustrations by Pierre Mion.)*

Half of what New York City throws out weekly (100,000 tons) ends up at Fresh Kills, 14 miles from Manhattan. Sprawling over 3,000 acres of Staten Island, this is the world's largest landfill. It holds 2.4 billion cubic feet of refuse, more than 25 times the volume of the Great Pyramid at Giza.



Sited on a salt marsh in 1948, the facility lacks modern comprehensive pollution controls. Before recent cleanup, more than a million gallons of its fluids, called leachate, seeped into nearby waters daily.

Every man, woman, and child in the United States generates four pounds of trash a day. Most of us have only vague ideas - and often misconceptions - about what that trash contains. But as landfill space shrinks and the cost of dumping trash rises, we need to know exactly what it is that we're throwing out so we can decide how best to manage it. With hands-on knowledge of our trash, the Garbage Project has calculated percentages of different materials in landfills, as represented by this schematic block to the right.

Perhaps the biggest surprise is the amount of paper we dispose of. Computers haven't saved us from a paper avalanche; they've added to it with mountains of printouts. In 1970 paper took up 35% of landfill space; today it takes up 50%.

Telephone directories, are among the fastest growing paper components. Newspapers are the largest single item in landfills, taking up as much as 18% of the space. Contrary to popular opinion, they do not biodegrade significantly - the Garbage Project finds legible copies that have been buried for 40 years.

Used by about 85% of U.S. babies, disposable diapers are increasingly perceived as a serious trash concern. The nation's yearly load of more than 16 billion disposable diapers weighs some 1.5 million tons but takes up 0.8% of landfill space. Polystyrene foam - thermal cups, for example - makes up nearly 1%. A bigger problem is construction and demolition debris, which accounts for 15%.

Recycling can reduce much of our trash load. The U.S. Environmental Protection Agency (EPA) estimates that we already recycle 13%. Aggressive recycling and creating markets for recycled materials could increase that figure to 45%, say some experts.

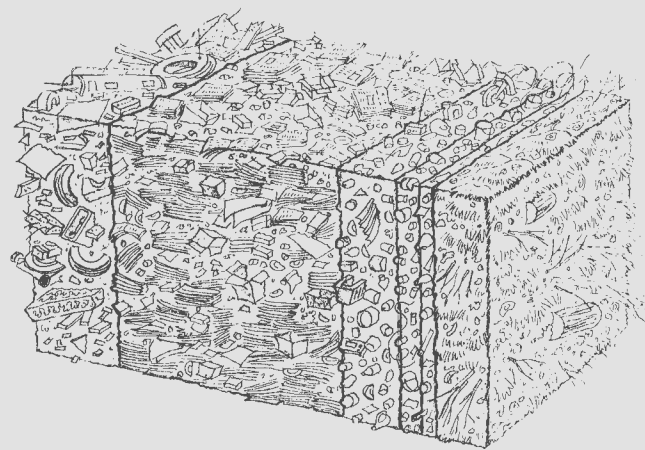
## Essay & Thesis Abstract Publication

*"There is a fundamental hurdle that all MES research faces, and that is finding an avenue for it to be read by the community at large."*

We have found the avenue! For the first time, we'll be binding abstracts of Theses and Essays of Distinction. The abstract publication will be sent to select state and local agencies, schools, and environmental organizations.

To participate, simply prepare an abstract of your thesis or essay and put it in the GSA mailbox in the MES lounge by May 15th. You may also include names and addresses of individuals or organizations you would like to target.

Abstracts should be no more than one page long, printed on white paper, with the title and the author's name centered on the page and the body of the abstract typed single spaced.



**Miscellaneous:** 20% by volume includes construction and demolition debris, tires, textiles, rubber, and disposable diapers.

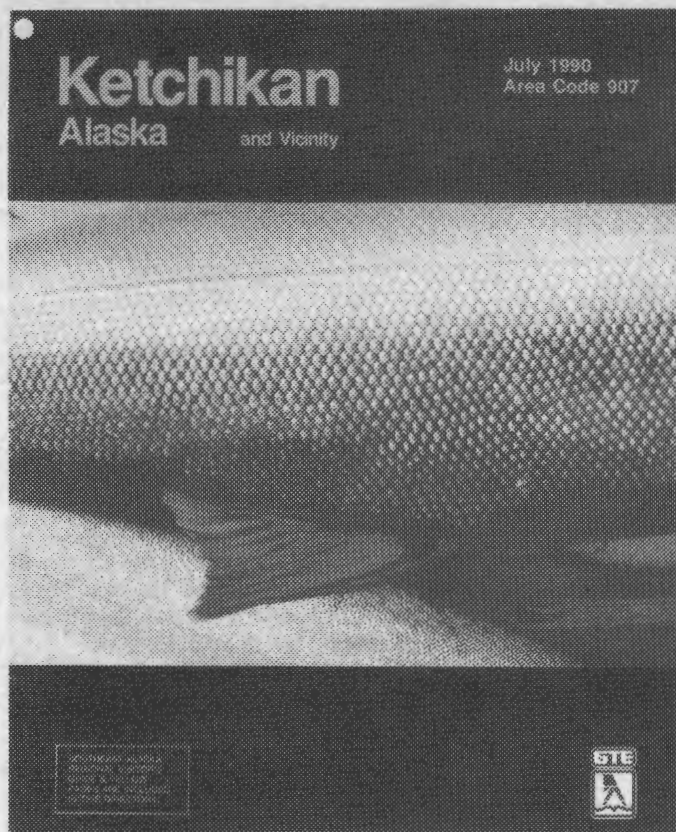
**Paper:** 50% includes packaging, newspapers, phone books, glossy magazines, and mail-order catalogs.

**Plastic:** 10% includes milk jugs, soda bottles, food packaging, garbage bags, and polystyrene foam.

**Metal:** 6% includes iron as well as aluminum and steel cans for food and beverages.

**Glass:** 1% includes beverage bottles, food containers, and cosmetics jars.

**Organics:** 13% includes wood, yard waste, and food scraps.



## MES Editor Hits the Big Time!

Alaskans sure love their fish! To prove it, the GTE-Alaskan Telephone company has awarded yours truly, Allen Pleus (in association with the Ketchikan telephone division) kudos for the best phone book cover design for 1990 in all Alaska! YEEEEHA!

And to honor this creative genius, they are flying me up to Ketchikan on May 15th for a salmon dinner and a hearty handshake with the Mayor. On May 16th, they are promptly kicking me back out of Alaska but not before I test the waters for some fresh fish to bring home.

Actually, the real reason I'm coming back on the 16th is so I won't miss a single episode of "Statfun '91!" (talk about a real tear-jerker). The best part is that they are making posters of the photograph and I'll try to snag one for the MES lounge to bring a little culture to the place. - AP

Think  
Spring!



## June Wedding

Friends of Bruce Baldwin, 3rd year MES student, are invited to celebrate his wedding to Gerie Henderson of White Salmon, Washington, on Saturday, June 22 at 1 p.m.

The wedding will be at Lewis & Clark State Park on the Jackson Highway south of Chehalis, with a potluck and reception to follow at the park.

For further information, contact Bruce at 7133 183rd Ave SW, Rochester 98579 (273-8014), or through his box in the MES lounge.

## Reminders:

- ☛ There will be a Rachel Carson Seminar on May 18th featuring a scrumptious potluck at "Chez Anna" starting at 6 pm.
- ☛ The Rachel Carson Forum itself is on Wednesday, May 22nd, 7 pm in Lecture Hall 1.
- ☛ The last meeting of the Student Advisory Board will be on Saturday, May 18th, at 9:30 am. We will be finishing up our discussion of Electives.
- ☛ Questions? Ask Anna at 866-6000 x6479.

## Internships & Employment

If you are interested in pursuing an internship, complete an orange internship form from the bin outside my office and return it to me. Please keep me informed of your status, Bonita

Lab 1 – Room 3022 866-6000 x5703

WHO: NW Assoc. of Marine & Aquatic Educators  
WHAT: Awareness to Action Conference Assoc Planner  
CONTACT: Laurie Usher @786-5445  
DURATION: Spring, Summer Quarters 1991  
SALARY: Volunteer, possible future stipend  
DEADLINE: A.S.A.P.

WHO: Thurston County Public Works  
WHAT: Administrative Intern/Assistant  
CONTACT: Cheryl Henderson @ 786-5485  
DURATION: 2 quarters min. - W/Sp/Su  
SALARY: \$6 +/-hr. DOE 10-20 hrs./wk  
DEADLINE: Open until filled

WHO: Dept of Ecology  
WHAT: Ass't to Education Coordinator  
CONTACT: Glen Alexander, Padilla Bay Estuarine Reserve  
1043 Bay View-Edison Rd, Mt Vernon 98273  
SALARY: Volunteer  
DEADLINE: Ongoing

WHO: Nisqually Reach Nature Center  
WHAT: Field trips, Education projects  
CONTACT: Lea Mitchell @459-0387  
DURATION: Ongoing  
SALARY: Volunteer  
DEADLINE: None

WHO: WashPIRG  
WHAT: Varied Internships  
CONTACT: Laura Reed @ 866-6000 x6058  
DURATION: Winter Quarter or check on Spring/Summer  
SALARY: CALL; 10-40 hrs/wk  
DEADLINE: CALL

WHO: MES Program  
WHAT: (2) MES Graduate Student Assn. Co-Coordiators  
CONTACT: Anna @ 866-6000 x6479  
DURATION: 1991-92 School Year  
SALARY: 5 hr/wk (250 hrs. total), 4 credits  
DEADLINE: ASAP

WHO: Discovery Park  
WHAT: Park Intern  
CONTACT: Gale Gruza @ 386-4236  
DURATION: Neg. w/school schedule  
SALARY: Volunteer  
DEADLINE: At least 2 wks before internship begins

WHO: Friends of the Earth - NW  
WHAT: Various projects  
CONTACT: David Ortman @ 633-1661  
DURATION: neg.  
SALARY: Volunteer; after 10 wks - neg.  
DEADLINE: Ongoing

WHO: Nat'l Network for Envir. Studies (NNEMS) Div. EPA  
WHAT: Funding specific topics w/internships/fellowships  
CONTACT: Ginger Wandless @ 202-475-9477

WHO: Thurston Conservation District  
Dobbs Crk Model Farm  
WHAT: Insect Survey Intern; Benthic Organism Intern;  
Manure Composting Intern; & Watershed Topographical  
Model Intern; OR PROJECT PROPOSAL  
CONTACT: Chris Walline @ 754-3588  
DURATION: Neg. over Spr. Sum, & next Fall + quarters  
SALARY: N/A Call  
DEADLINE: Until filled

WHO: City of Lacey  
WHAT: Department Assistant I  
CONTACT: Personnel Director @ 491-3213  
DURATION: Permanent  
SALARY: \$8.34/hr - 30 hrs/wk  
DEADLINE: April 19, 1991

WHO: MES Program  
WHAT: Rachel Carson Environ. Forum Coordinator  
CONTACT: Anna @ 866-6000 x6479  
DURATION: 1991-92 School Year  
SALARY: 'Cause you love to do it!  
DEADLINE: ASAP

MES/MPA Update  
The Evergreen State College  
Graduate Programs – Lab I  
Olympia, WA 98505

Nonprofit Org  
US Post Paid  
Olympia, WA  
Permit #65